

# Multiple Sewershed Package 16 A

Alla Korostyshevsky, P.E.

Project Engineer

Roxanne Lockhart

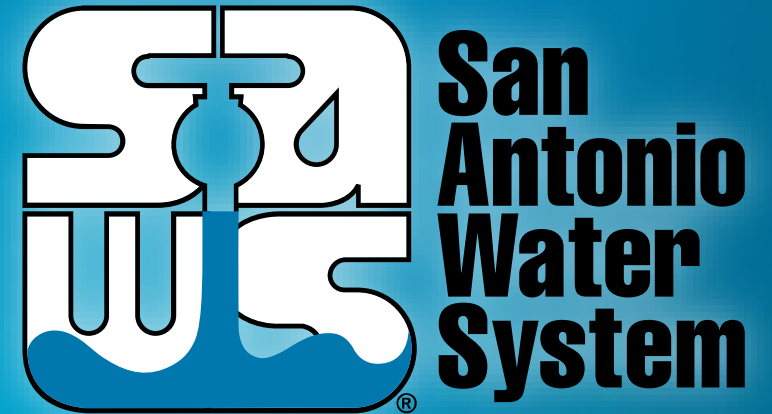
Contract Administrator

Diana Woltersdorf

Manager – Contract Administration

Marisol V. Robles

SMWVB Program Manager, SAWS



Non- Mandatory Pre-Bid Meeting

March 12, 2021

MAKING SAN ANTONIO  
**WATERFUL** 

# Oral Statements

Oral statements or discussion during the pre-bid meeting today will not be binding, nor will it change or affect the terms or conditions within the Plans and Specifications of this Project. Changes, if any, will be addressed in writing only via an Addendum.

# Agenda

- General Information
- SMWVB Requirements
- Contract Solicitation Website
- Vendor Registration
- Key Reminders
- IFB Schedule
- Bid Packet Preparation
- Contract Requirements
- Contact Information
- Project Overview
- Statement of Bidder's Experience
- Special Conditions
- Supplemental Conditions
- Project Details

# General Information

- This is a Non-Mandatory pre-bid meeting
- Attendees should sign-in via chat on WebEx
- This presentation and the attendance sheet will be posted to the SAWS website
- Key project information:
  - Construction duration is 270 calendar days
  - Construction estimate \$1,712,251.00
- Construction services being procured through IFB



# Aspirational SMWB Goal

Industry	Aspirational SMWB Goal
Construction	20%

The aspirational SMWB goal is 20% of your total bid price.

## Accepted SMWB Certification Agency

- **South Central Texas Regional Certification Agency**

(Includes the Texas Historically Underutilized Business “HUB” Program, MBE, WBE, SBE)

### Minimum Qualifications for SMWB recognition:

- SBE-Certified (even MBEs and WBEs)
- ***Local office or local equipment yard***

# Good Faith Effort Plan (GFEP) FAQs

- **Q: Is the 20% SMWB goal mandatory?**  
A: No, but we ask prime contractors to do their best with good faith outreach efforts. If the goal is not met, proof of outreach efforts is required with the submittal.
- **Q: What if I am having trouble finding SMWB subcontractors?**  
A: Please email the SMWB Program Manager with the scopes of work you are seeking. You will receive lists of local SMWB-certified firms to contact.
- **Q: What if my business is SMWB-certified? Do I need to find SMWB subs?**  
A: If your firm is SMWB-certified, you will most likely meet the goal. However, the GFEP is a required document, and a good faith outreach effort is still necessary.
- **Q: Do I need to include all my subcontractors in the GFEP or just those that qualify towards the SMWB goal?**  
A: All subcontractors need to be included in the GFEP, even those that may not count towards the SMWB goal.
- **Q: What if I have questions about the GFEP?**  
A: Please contact the SMWB Program Manager at 210-233-3420, or at [Marisol.Robles@saws.org](mailto:Marisol.Robles@saws.org) . GFEP questions can be asked at any time before the submittal is due.



# Post Award: Subcontractor Payment & Utilization Reporting (S.P.U.R.) System

1. Subcontractor & Supplier Payment Tracking
2. Subcontractor and Supplier Additions or Substitutions
3. LCP Tracker
4. Must be Current and Accurate before Retainage is released

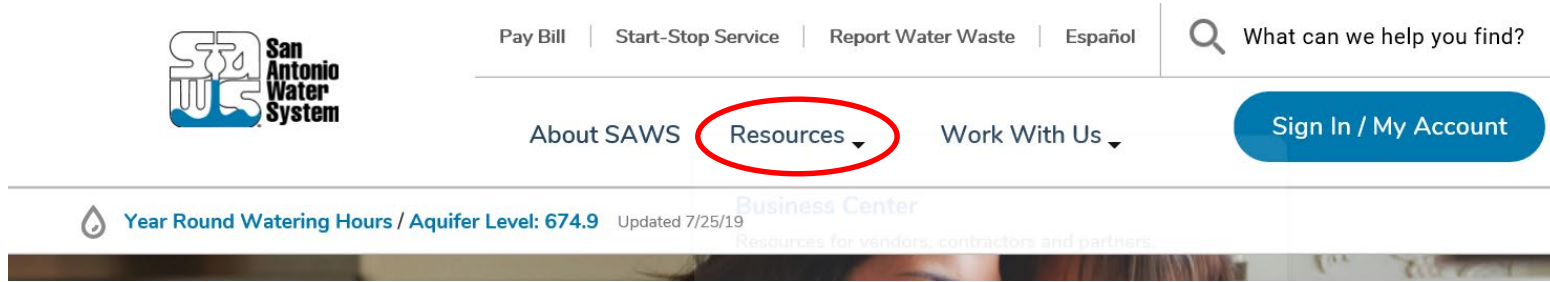
<https://saws.smwbe.com>

The screenshot shows the homepage of the San Antonio Water System's Subcontractor Payment & Utilization Reporting System. The page features a blue header with the San Antonio Water System logo on the left, "OUR MAIN SITE" in the center, and a "CONTACT SUPPORT" button on the right. The main content area has a background image of industrial water treatment equipment. The title "Subcontractor Payment & Utilization Reporting System" is prominently displayed in white text, with a "Log In" button below it. Below the title, there are three columns of links: "System Training" (with a "Training" button), "About the System" (with an "Information for Vendors" button), and "Account Access" (with "Account Lookup" and "Forgot Password" buttons). At the bottom, a footer states: "The Subcontractor Payment & Utilization Reporting System is powered by B2Cnow Software © Copyright 2018."

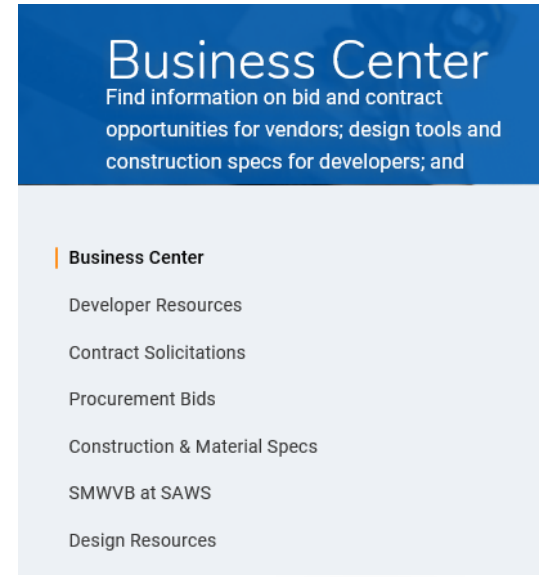


# Contract Solicitations Website – Recent Changes

- To locate the Contract Solicitations website choose Resources




- At the drop down menu choose Contract Solicitations



# Contract Solicitations Website – Recent Changes


- Choose the specific project
- The following buttons are now located under the advertisement:
  - Notify Me
  - Plan Holder’s List
  - Downloads
    - Plans
    - Specs
    - Addendums
    - Geotechnical Data Report






**Non-Mandatory  
Pre-Bid Meeting**  
10:00 AM, Tuesday Aug. 6, 2019

San Antonio Water System Customer Service  
Building, 2800 U.S. Hwy 281 N, San Antonio,  
Texas 78212; Conference Room CR-C145



**Notify Me**  
Receive updates sent straight to your inbox.


[Subscribe](#)




**Plan Holders List**  
View plan holders list.

[View List](#)

### Downloads

**Specifications** 

Jul. 31, 2019  
Note: You must be logged in to access this document.

**Plans** 

Jul. 31, 2019  
Note: You must be logged in to access this document.

# Vendor Registration & Notification (VRN)

- Please register through SAWS Vendor Registration Program on the SAWS website at [www.saws.org](http://www.saws.org) to ensure access to the latest information.
- To receive updates on specific projects, registered vendors must 'Subscribe' to the project by selecting the project, and clicking 'Subscribe' under the Notify Me box.

[https://apps.saws.org/Business\\_Center/Contractsol/](https://apps.saws.org/Business_Center/Contractsol/)



Notify Me

Receive updates sent straight to your inbox.



Subscribe

# Key Reminders

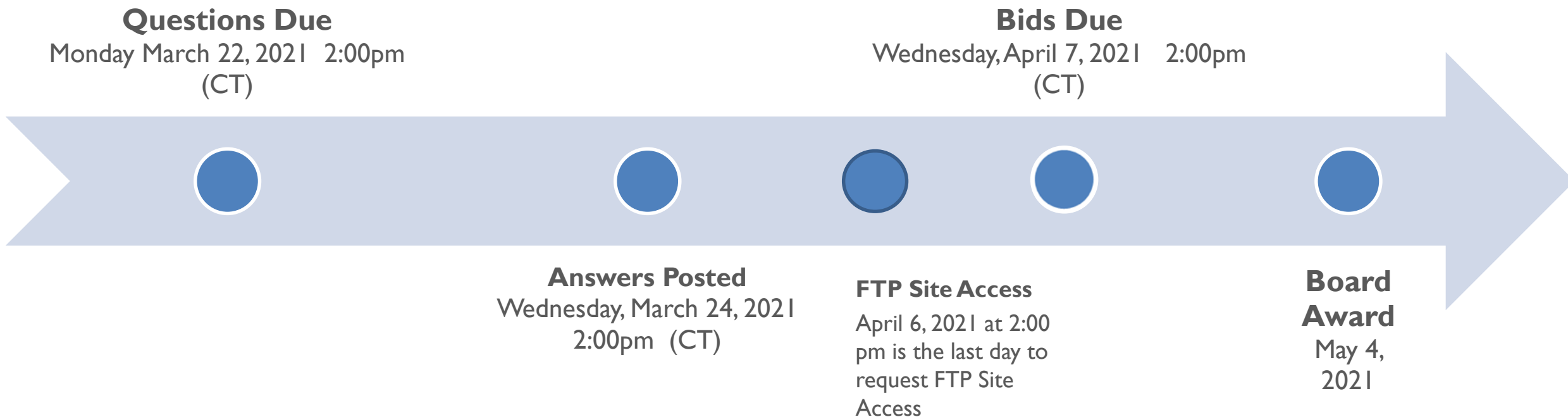
- All questions should be sent in writing to Roxanne Lockhart, Contract Administrator by [roxanne.lockhart@saws.org](mailto:roxanne.lockhart@saws.org) or 210-233-4438.
  - Please identify the project by its associated solicitation number.
- Contractors should not contact the SAWWS project engineer, the consultants for this project, or any other SAWWS staff up until Board award.



## Key Reminders (cont..)

- Late bids will not be accepted, and will be returned unopened.
- Due to the COVID-19 emergency and to protect the health of the public, SAWWS is implementing new procedures for the submission of bids.
  - Bids will be received either Electronically or through Sealed bids.
  - Electronic bids will be received via the secure SAWWS FTP site.
- Sealed bids will be received by Contract Administration, 2800 U.S. Hwy 281 North, Tower II, Customer Center Building, via a drop box located on the left wall when walking through the first set of double glass doors of the main Tower II entry on the north side of the building.
- If bids will be delivered in person to SAWWS, Bidders should allow sufficient travel time

# IFB Schedule



# Bid Packet Preparation

- Electronic or Physical; if electronic please see Electronic Bid Opening Instructions for last day to request FTP site access.
- Utilize the Bid Packet Checklist within the specifications
- Double check all mathematical calculations and verify all extensions
- Addendums are acknowledged on the Bid Proposals
- Ensure Mobilization & Prep ROW Line Item does not exceed the percentage allowed
- References and contact information should be verified by the Bidder prior to submitting a bid for this project

# Bid Packet Preparation (cont.)

- Only limited items are required with the initial bid packet
- Apparent low bidder must submit additional information within 24 hours of the bid opening to include:
  - Conflict of Interest Questionnaire
  - Proof of Insurability (Letter from Insurer or Sample Certificate of Insurance)
  - Company information packet
  - Statement regarding ability to complete the project
  - W-9
  - Statement of Bidder's Experience (SBE) form
    - Projects A-1 thru A-3 (work performed by Bidder) and A-4 (Bidder or Bidder's Bypass subcontractor)
  - Detailed Baseline Schedule using May 17, 2021
- Bidders must provide projects on the SBE form that meet all of the requirements



# Contract Requirements

## Prevailing Wage Rate and Labor Standards – Section 2.10 of the General Conditions

- Certified payroll to be submitted on weekly basis
- Wage decisions are included within the specifications
- Contractors to utilize LCP Tracker
- Site visits are random and unannounced
- Interviews will be Conducted and will be private & confidential
- Payroll records are subject to review
- All apprenticeship programs will need to be approved by Department of Labor prior to starting
- Contractors are responsible for sub-contractor payroll
- Late payrolls delay contractor payments from SAWWS

# Contract Requirements

- Insurance requirements are found in Section 5.7 of the GCs
  - Pollution Liability & Installation Floaters is required
  - Maintain insurance coverage during the construction of this Project
- Compliant prior to executing the contract
- Will ask for insurance prior to Board award to expedite execution of the contract
  - Any deficiencies must be corrected prior to Board award

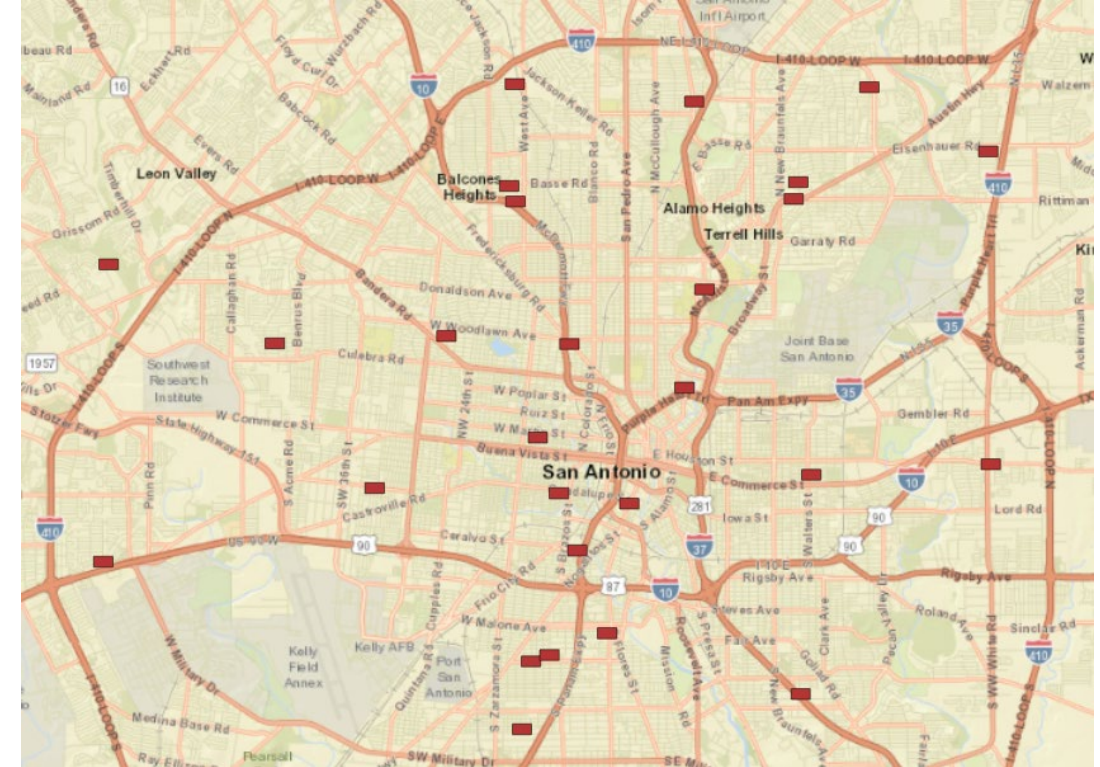
# Contact Information

<u>Contact Name</u>	<u>Title</u>	<u>Telephone Number</u>	<u>Email address</u>
Roxanne Lockhart	Contract Administrator	210-233-4438	<a href="mailto:Roxanne.Lockhart@saws.org">Roxanne.Lockhart@saws.org</a>
Marisol V. Robles	SMWVB Program Manager	210-233-3420	<a href="mailto:Marisol.Robles@saws.org">Marisol.Robles@saws.org</a>



# Project Background

- Bid for construction is for a specified contract for the construction of approximately 10,889 linear feet of 8"-21" diameter sanitary sewer main to be rehabilitated by cured in place (CIPP) and associated manhole improvements.
- Project is part of the Consent Decree. See Special Conditions for additional information on these requirements.
- Contractor is to become familiar with the plans, locations, and specifications.



Project Location Map



# Supplemental Conditions

- Contractor shall perform the work with its own organization on at least 40% of the total original contract price which should be indicated on the Good Faith Effort Plan.
- Bidder is required to submit Statement of Bidders Experience as part of their bid.
- Liquidated damages for the purpose of this contract, will be assessed at \$859 per day.

# Project Details

## Project Locations

### Site 3 – Jones Maltsberger

- 308-ft 12” CIPP
- Alley and Street ROW Access
- No Services
- Rehabilitation of 2 manholes
- Requires VIA Coordination





# Project Details

## Project Locations

### Site 4 – Kincaid

- 306-ft 8” CIPP
- Alley, Private Property and Street ROW Access
- No Services
- 3 Point Repairs (1 in high PCI intersection)



– Similar Sites: 25, 26

# Project Details

## Project Locations

### Site 5 – Greenwich

- 405-ft 8” CIPP
- Street ROW Access
- 6 Services by Excavation
- 3 Point Repairs
- Rehabilitation of 1 manhole

– Similar Sites: 28





# Project Details

## Project Locations

### Site 8 – El Monte

- 617-ft 8” CIPP
- Alley, Private and Commercial Property
- 13 Services by Remote
- Rehabilitation of 3 Manholes



– Similar Sites: 1, 2, 7, 24, 25

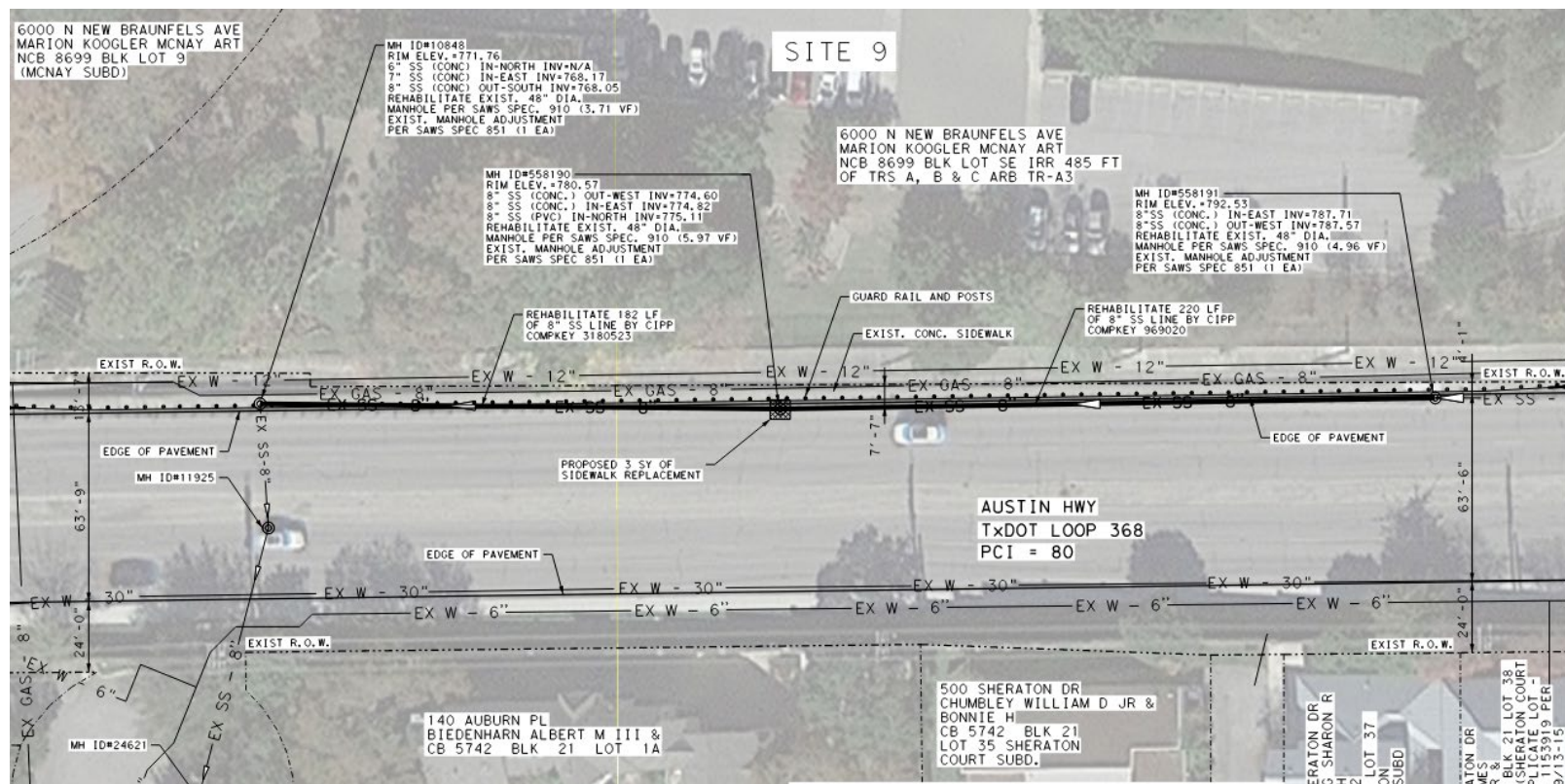


# Project Details

## Project Locations

### Site 9 – Austin Hwy

- 402-ft 8” CIPP
- TxDOT ROW
- No Services
- Bypass extends to N. New Braunfels Ave
- Rehabilitation of 3 Manholes



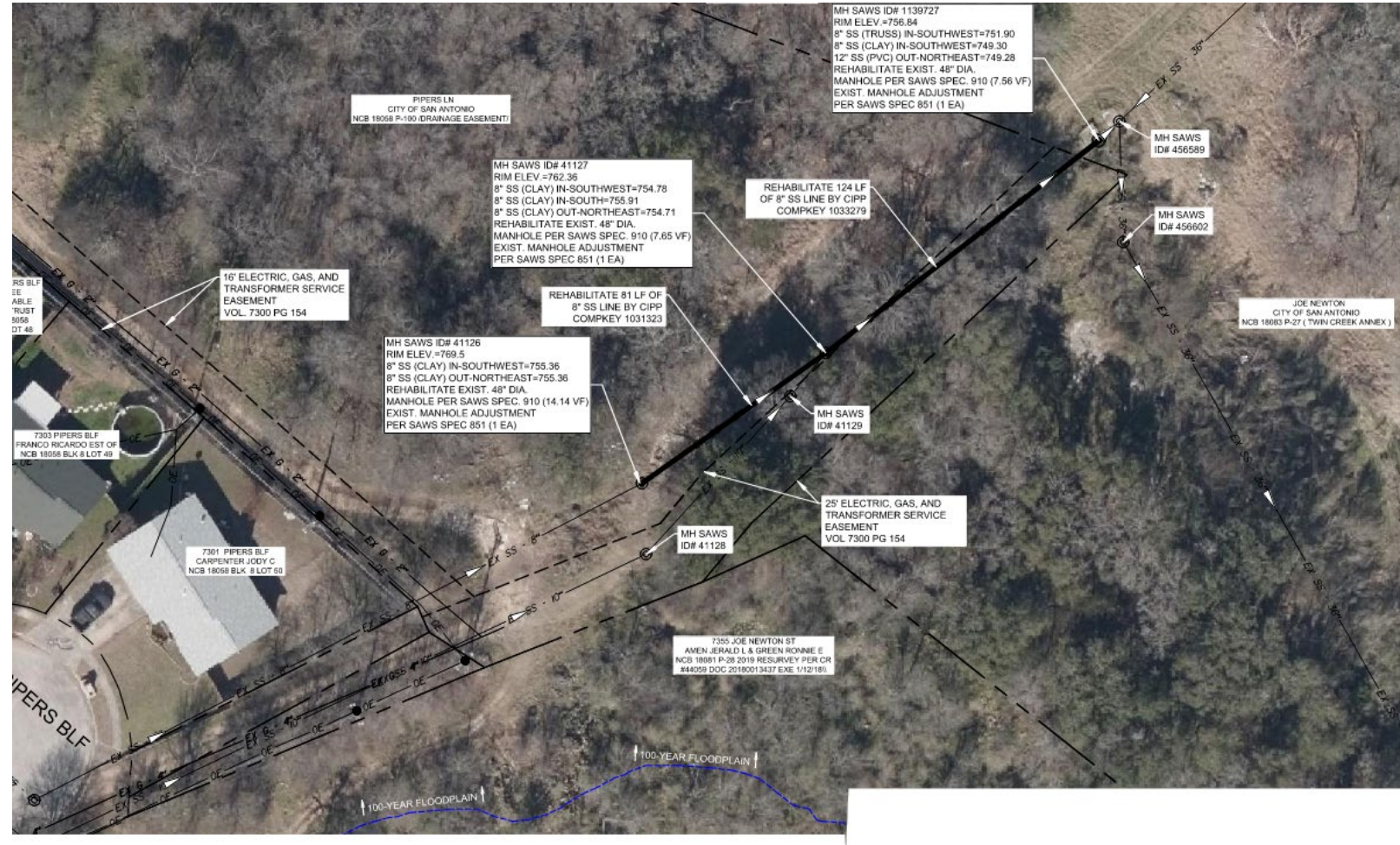


# Project Details

## Project Locations

### Site 10 – Pipers Bluff

- 205-ft 8” CIPP
- Street ROW and Culebra Creek Access
- No Services
- Rehabilitation of 3 Manholes





# Project Details

## Project Locations

### Site 12 – Cervantes

- 403-ft 8” CIPP
- Street ROW and Private Property Access
- 17 Services by Remote
- Rehabilitation of 2 Manholes



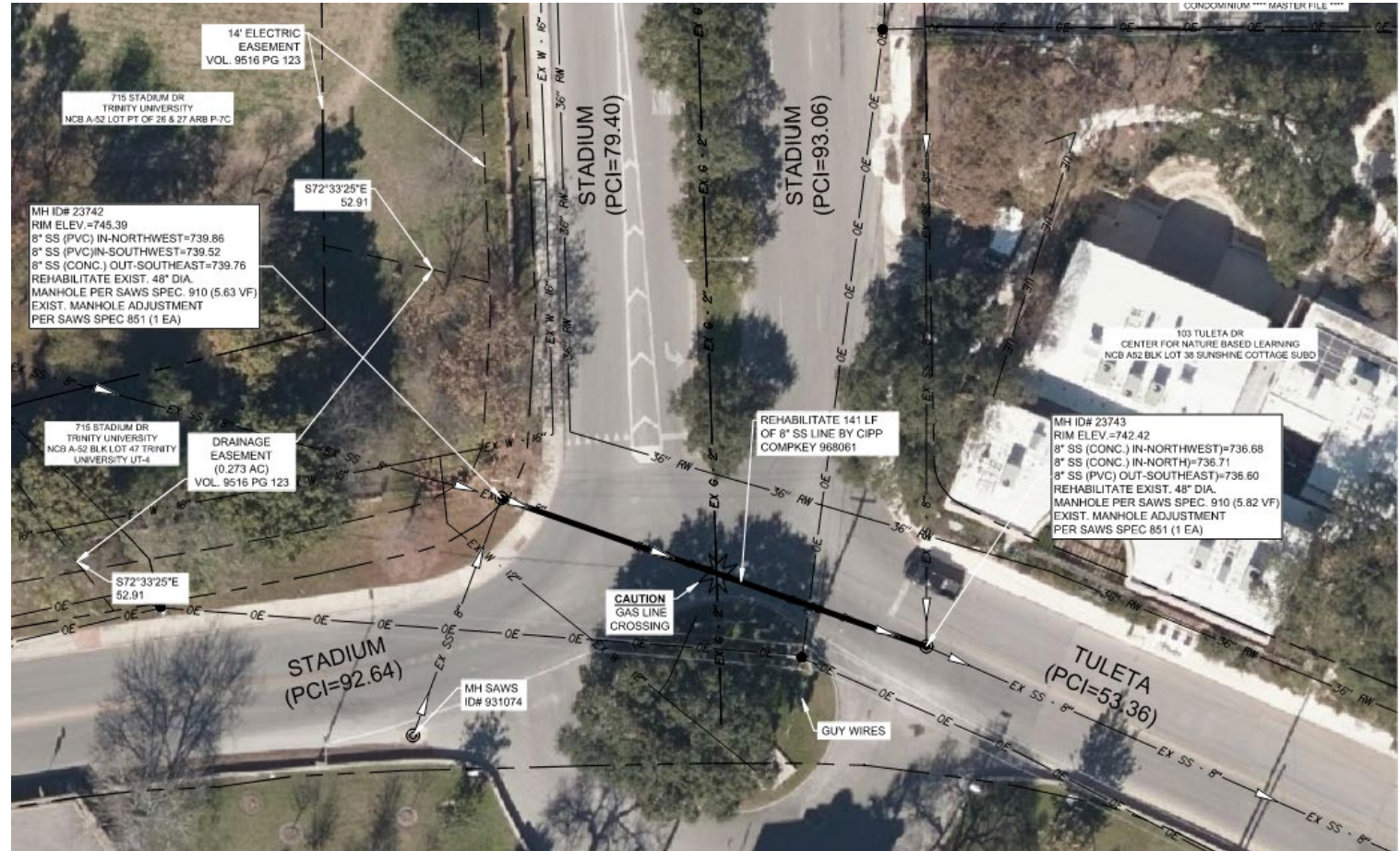


# Project Details

## Project Locations

### Site II – Stadium Dr.

- 141-ft 8” CIPP
- Street ROW
- Coordination with Trinity University for bypass
- No Services
- Rehabilitation of 2 Manholes





# Project Details

## Project Locations

### Site 13 – W. French

- 1,448-ft 8” CIPP
- Street ROW
- 27 Services by Remote
- Rehabilitation of 5 Manholes



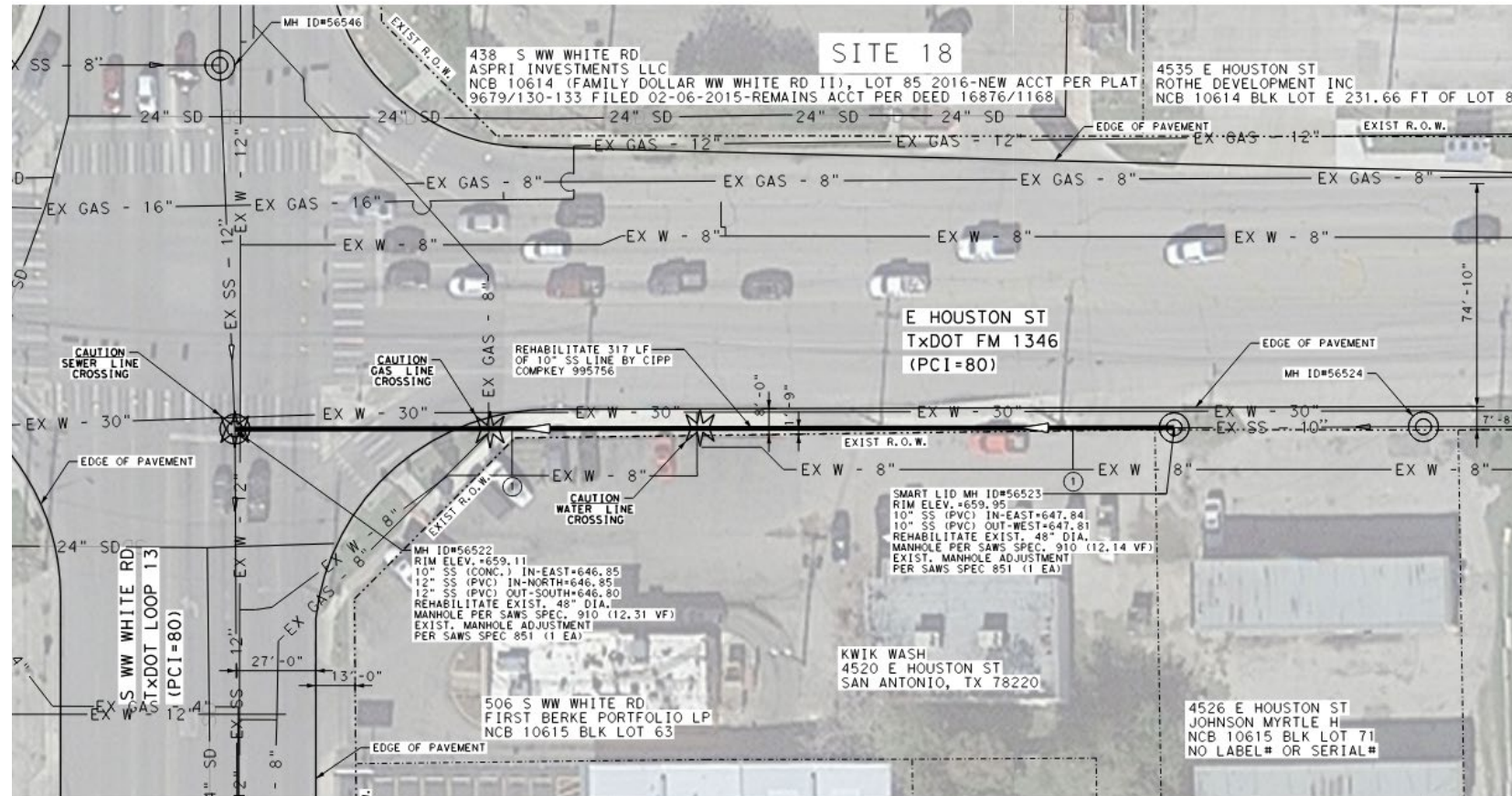
– Similar Sites: 16, 17, 19, 20, 21, 23, 27, 29

# Project Details

## Project Locations

### Site 18 – E. Houston

- 317-ft 10” CIPP
- TxDOT ROW
- I Service by Remote
- Rehabilitation of 2 Manholes
- Coordinate with Washateria



– Similar Site: 14

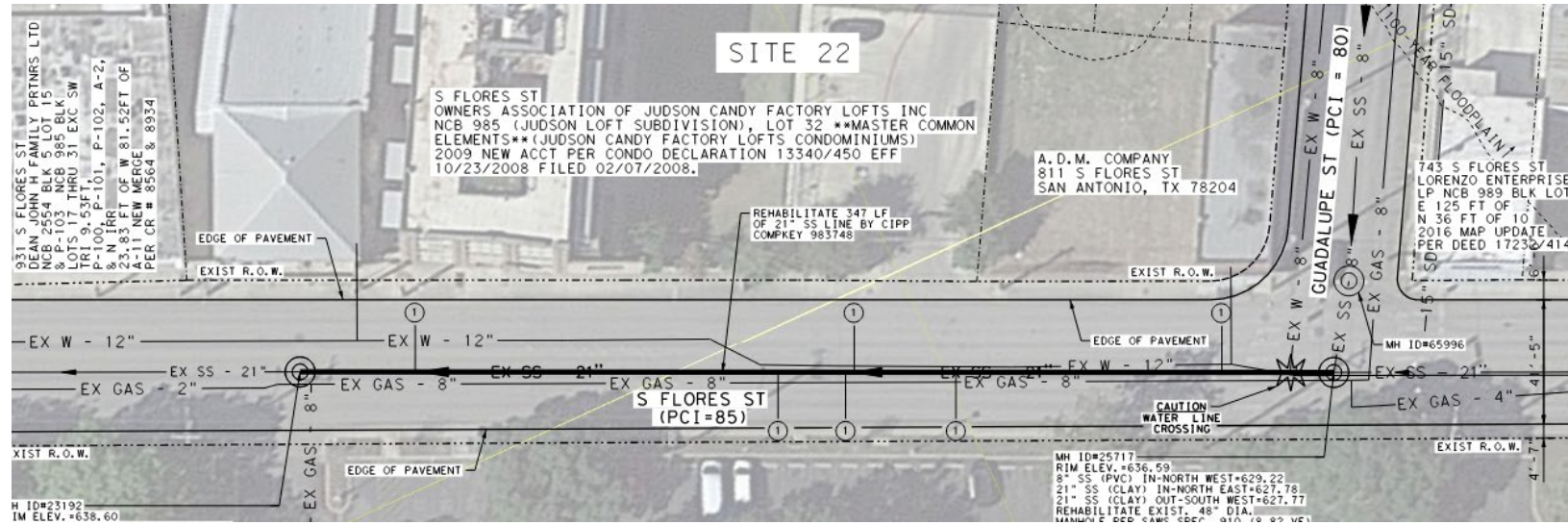


# Project Details

## Project Locations

### Site 22 – S. Flores St.

- 347-ft 21" CIPP
- Street ROW
- 6 Services by Remote
- Rehabilitation of 2 Manholes





# Special Conditions

## Specifications

- All work performed shall be in accordance with the current Contract Documents and SAWS Specifications for Water and Sanitary Sewer Construction updated in 2017 Specifications.

## Permits and Coordination Requirements

- CoSA ROW Permits will be required and will be the responsibility of the Contractor to obtain.
- COSA ROW requires 30 days to review the contractor permits.
- Traffic Control Plans (TCP) and Bypass Layout Sheets are suggested routes only. The Contractor may provide an alternative Traffic Control Plan and Bypass Layout for approval by SAWS, TxDOT, and CoSA. The TCP must be signed, sealed, and dated by a Professional Engineer licensed in the state of Texas and submitted for approval at least two weeks prior to installation.
- Contractor shall prioritize the Projection Location 14 ahead of the others in submitted schedule. The other locations do not have an order of priority.

# Special Conditions

## Payment:

- It is the Contractor's responsibility for the preparation, research, submittal and layout of the site-specific submittals, including the Storm Water Pollution Prevention Plan, Traffic Control Plan, the Bypass Pumping Plan, and its approvals at no cost to SAWS. If no pay item is included for any stipulated item, it will be considered as subsidiary to other pay items. There will be no measurement or payment for the Storm Water Pollution Prevention Plan.
- There will be no measurement or payment for insurance; bonding; and permitting costs on this contract. There will be no separate payment for temporary or permanent fencing, with all related costs included in the item to which it pertains.

## Access and Coordination:

- Appendix A includes the Right of Entry (ROE) agreements that have been acquired by SAWS. Contractor shall carefully review these documents. The Contractor is responsible for obtaining any additional ROE that is needed to complete the proposed work (NSPI).

# Special Provisions to Technical Specifications

## Item 530 Barricades, Signs, and Traffic Handling

- Measurement and Payment is “Per Each” Project Location
- Measurement of the work for providing, installing, moving, repairing, maintaining, cleaning, and removing all barricades, signs, cones, lights, and other such devices and handling traffic shall be incidental to the work and will not be paid separately

## Item 864-S1 & S2 Bypass Pumping (Small and Larger Diameter Sanitary Sewers)

- Measurement and Payment is “Per Each” Project Location
- Where the bypass of a small diameter sanitary sewer is required to complete the rehabilitation of the project main and associated manhole, the work will be incidental to this item.
- Measurement of the work for pipe plugs shall be incidental to the work and will not have a separate pay item.
- Any damages, repairs, etc., to private or public property, including repairs to the sidewalks, driveways, curbs, and asphaltic pavement items, will not be considered for any additional payment.
- The use of ramps shall be incidental to this item. The installation of any manholes (including “doghouse” style) to be used for the sole purpose of bypassing flow to facilitate the proposed improvements shall be considered incidental to this item.
- Removal of manhole ring and covers or manhole cones to accommodate bypass piping suction or discharge shall not be measured separately for payment and shall be considered subsidiary to this item.

# Special Provisions to Technical Specifications

## Item 901 CIPP

- Only hot water inversions is allowed.

## Item 1103 Point Repairs and Obstruction Removals

- No direct payment shall be made for hand excavation.
- Payment for paving restoration for each point repair located in pavement shall be made separately in accordance with applicable bid items.
- Hanging gaskets shall not be measured separately for payment and shall be considered subsidiary to the associated work pay item.

## Item 1109 Sanitary Sewer Lateral Stub Outs or Reconnections

- Protruding lateral connections which must be removed to allow liner insertion and which are removed without excavation are paid separately under Item 1103.
- Protruding lateral connections which are removed by open cut excavation shall not be paid separately and shall be paid as a lateral reconnection under this item.



# QUESTIONS?

*Reminder: Oral statements or discussion during the pre-bid meeting today will not be binding, nor will it change or affect the terms or conditions within the Plans and Specifications of this Project. Changes, if any, will be addressed in writing only via an Addendum.*

# Multiple Sewershed Package 16 A

Alla Korostyshevsky, P.E.

Project Engineer

Roxanne Lockhart

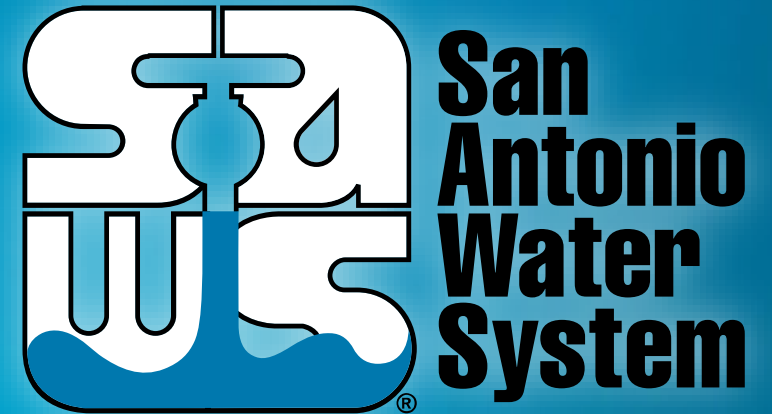
Contract Administrator

Diana Woltersdorf

Manager – Contract Administration

Marisol V. Robles

SMWVB Program Manager, SAWS



Non- Mandatory Pre-Bid Meeting

March 12, 2021

MAKING SAN ANTONIO  
**WATERFUL** 